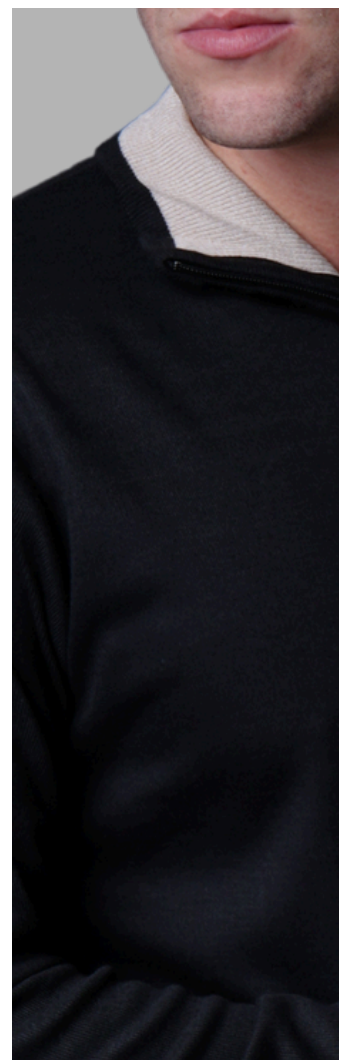




# MALHA LISA 1/2 ZIPER DETALHE

REGULAR R\$ 60,00

PRETO/  
BEGE  
CLARO



# MALHA LISA 1/2 ZIPER DETALHE

REF:MMDZ-200/CM

P	M	G	GG	CX: 12
2	4	4	2	

REF:MMDZ-200/SM

P	M	G	GG	CX: 12
2	4	4	2	



# MALHA LISA 1/2 ZIPER DETALHE

REF:MMDZ-201/CM

P	M	G	GG	CX: 12
2	4	4	2	

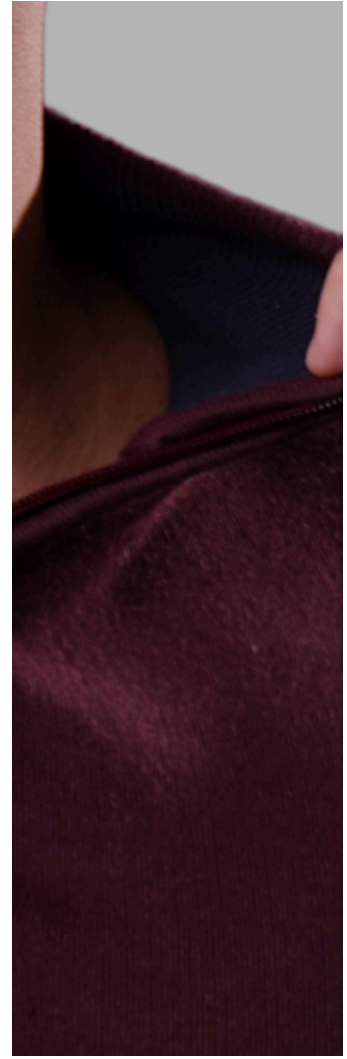
REF:MMDZ-201/SM

P	M	G	GG	CX: 12
2	4	4	2	



MARINHO/  
CINZA

VINHO/  
MARINHO



# MALHA LISA 1/2 ZIPER DETALHE

REF:MMDZ-202/CM

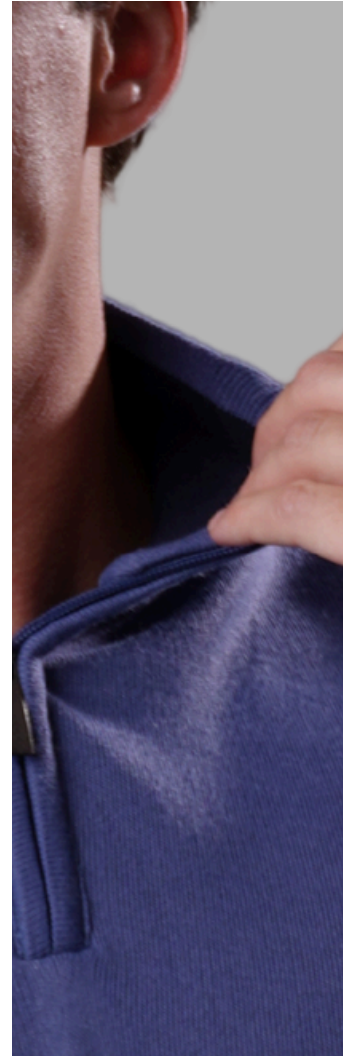
P	M	G	GG	CX: 12
2	4	4	2	

REF:MMDZ-202/SM

P	M	G	GG	CX: 12
2	4	4	2	



CINZA  
AZULADO/  
MARINHO



# MALHA LISA 1/2 ZIPER DETALHE

REF:MMDZ-203/CM

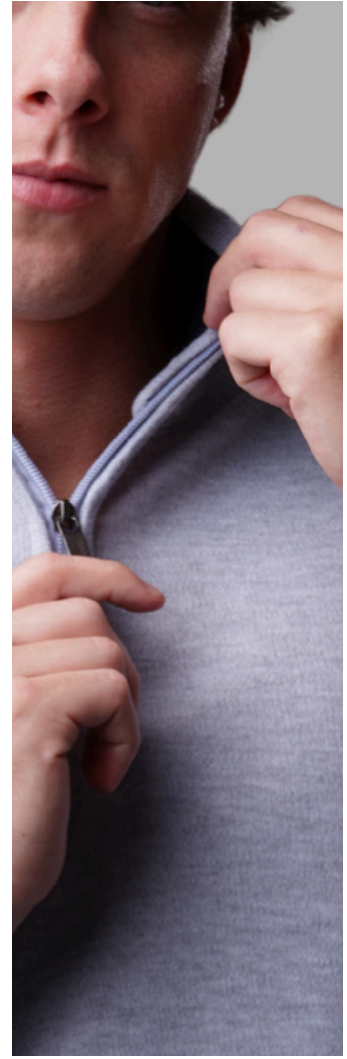
P	M	G	GG	CX: 12
2	4	4	2	

REF:MMDZ-203/SM

P	M	G	GG	CX: 12
2	4	4	2	



CINZA/  
MARINHO



# MALHA LISA 1/2 ZIPER DETALHE

REF:MMDZ-204/CM

P	M	G	GG	CX: 12
2	4	4	2	

REF:MMDZ-204/SM

P	M	G	GG	CX: 12
2	4	4	2	



CINZA  
MÉDIO/  
CINZA  
CLARO



# MALHA LISA 1/2 ZIPER DETALHE

REF:MMDZ-205/CM

P	M	G	GG	CX: 12
2	4	4	2	

REF:MMDZ-205/SM

P	M	G	GG	CX: 12
2	4	4	2	



# MALHA LISA 1/2 ZIPER DETALHE

REF:MMDZ-206/CM

P	M	G	GG	CX: 12
2	4	4	2	

REF:MMDZ-206/SM

P	M	G	GG	CX: 12
2	4	4	2	



MARINHO  
ESCURO/  
BEGE



MARROM  
MESCLA/  
BEGE



# MALHA LISA 1/2 ZIPER DETALHE

REF:MMDZ-207/CM

P	M	G	GG	CX: 12
2	4	4	2	

REF:MMDZ-207/SM

P	M	G	GG	CX: 12
2	4	4	2	



AZUL  
CLARO  
MESCLA/  
MARINHO



# MALHA LISA 1/2 ZIPER DETALHE

REF:MMDZ-208/CM

P	M	G	GG	CX: 12
2	4	4	2	

REF:MMDZ-208/SM

P	M	G	GG	CX: 12
2	4	4	2	



MARROM/  
BEGE



# MALHA LISA 1/2 ZIPER DETALHE

REF:MMDZ-209/CM

P	M	G	GG	CX: 12
2	4	4	2	

REF:MMDZ-209/SM

P	M	G	GG	CX: 12
2	4	4	2	



BEGE/  
CAMEL



# MALHA LISA 1/2 ZIPER DETALHE

REF:MMDZ-210/CM

P	M	G	GG	CX: 12
2	4	4	2	

REF:MMDZ-210/SM

P	M	G	GG	CX: 12
2	4	4	2	



CAMEL/  
MARINHO



# MALHA LISA 1/2 ZIPER DETALHE

REF:MMDZ-211/CM

P	M	G	GG	CX: 12
2	4	4	2	

REF:MMDZ-211/SM

P	M	G	GG	CX: 12
2	4	4	2	



BEGE  
CLARO/  
MARROM



# MALHA LISA 1/2 ZIPER DETALHE

REF:MMDZ-212/CM

P	M	G	GG	CX: 12
2	4	4	2	

REF:MMDZ-212/SM

P	M	G	GG	CX: 12
2	4	4	2	



bluebay.com.br 

(11) 2618-9758